

**Ordering Code**

**DNC** - **50** - **50** - **P** - **A** - **S2**

Type  
DNC Standard double action type

Note: Special-purpose dust-proof and corrosion - proof air cylinder for medicine and health sector profession is available (φ32-φ100)

Piston Diameter φ32-125mm  
Stroke 100-2000mm

P-Buffer type  
PPV/Adjustable buffer

Magnet Code  
Blank/Not Attach  
Magnet  
A:Attach Magnet

Plunger Code  
Blank/Single End  
Connecting Rod  
S2:Both End Connecting Rod



**Ordering Code**

**SU** - **D** - **50** - **X** - **50** - **25** - **S** - **LB**

Type  
SI-Hidden Pull Rod Type

Cylinder Bour φ32-1500mm  
φ40-φ307-1-1200mm  
φ63-φ200-1-1500mm

Stroke  
φ32-1500mm  
φ40-φ307-1-1200mm  
φ63-φ200-1-1500mm

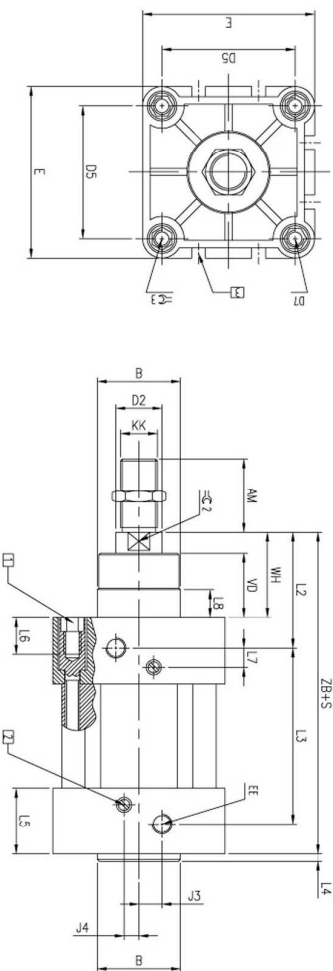
SU adjustable stroke type

Magnet Code  
Blank/not attach magnet  
S:attach magnet

Blank/basic type  
LB:front and back fixed type  
FA:front cover fixed type  
FR:front flange type  
FB:back cover fixed type  
CA:back cover fixed type (Single Earning)  
CB:back cover fixed type (double Earning)  
TC:swinging type  
TC-M:swinging type attaching foot seat

Note:the minimum distance of the air cylinder with position sensing is 25mm to ensure reliable measure sensing.

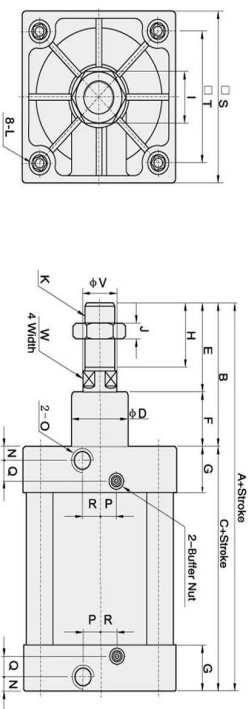
## ※ Fixing Dimensions



Bore mm	AM	φ d1	φ f8	D2	D5	D7	E	EE	J3	J4	KK	L2	L3	L4	L5	L6	L7	L8	VD	WH	ZB	
32	22	30	12	32.5	M6	45	G1/8	6	5.2	M10X1.25	41.6	62.8	4	25.1	16	3.3	10	10	6	18	26	120
40	24	35	16	38	M6	54	G1/4	8	6	M12X1.25	44	77	4	29.6	16	3.6	10.5	13	6	21.5	30	135
50	32	40	20	46.5	M8	64	G1/4	9	7	M16X1.5	51	78	4	29.6	17	3.6	11.5	17	8	28	37	143
63	32	45	20	56.5	M8	75	G3/8	9.5	8	M16X1.5	54	87	4	35.6	17	4.5	15	17	8	28.5	37	158
80	40	45	25	72	M10	93	G3/8	12.5	8	M20X1.5	62.4	95.2	4	35.9	17	10.5	15.7	22	6	34.7	46	174
100	40	55	25	89	M10	110	G1/2	11.8	10	M20X1.5	69.8	100.4	4	38.8	17	8	19.2	22	6	38.2	51	189

## ※ Basic dimensions

φ32~φ200



Sign	A	B	C	D	E	F	G	H	I	J	K	L
32	142	48	94	30	30	18	27.5	22	17	6	M10X1.25	M6
40	159	54	105	35	34	20	32	24	19	7	M12X1.25	M8
50	175	69	121	40	42	27	31	24	24	8	M16X1.5	M8
63	190	86	128	45	49	29	33	32	24	8	M16X1.5	M10
80	214	91	138	55	59	33	37	40	30	10	M20X1.5	M10
100	229	91	180	80	74	45	46	54	41	13.5	M27X2	M12
125	279	119	180	85	94	58	50	72	55	18	M36X2	M16
160	332	152	180	75	100	67	50	72	55	18	M36X2	M16
200	347	167	180	75	100	67	50	72	55	18	M36X2	M16

Diameter / Sign	N	O	P	Q	R	S	T	V	W
32	13.5	PT1/8	4	7.5	7	47	32.5	12	10
40	16	PT1/4	6	9.5	9	53	38	16	13
50	18.5	PT1/4	8.5	6.7	9	65	46.5	20	17
63	19	PT3/8	6	7.7	9	75	56.5	20	17
80	19	PT3/8	10	5	13.5	95	72	25	22
100	18	PT1/2	12.5	10	14.5	115	89	25	22
125	23	PT3/4	14	12	14	140	110	32	27
160	25	PT3/4	15	12	20	180	140	40	36
200	25	PT3/4	15	12	20	220	175	40	36

\*The dimension of the magnet model and non-magnet model is the same